

## Hurricane Frances Fills Inlet Filters In Reedy Creek!



View of inlet filter immediately after grate was removed.

Most of the inlet filters are a specialized version of the *Grate Inlet Skimmer Box* designed to fit in a grated curb inlet.

*Stainless steel screens of multiple sieve sizes optimize the removal efficiency and maximize water flow.*

The inlet filters are custom sized so that the largest inlet filter possible is fitted to each inlet...

***Bigger is Better!***

The filters can be easily removed.



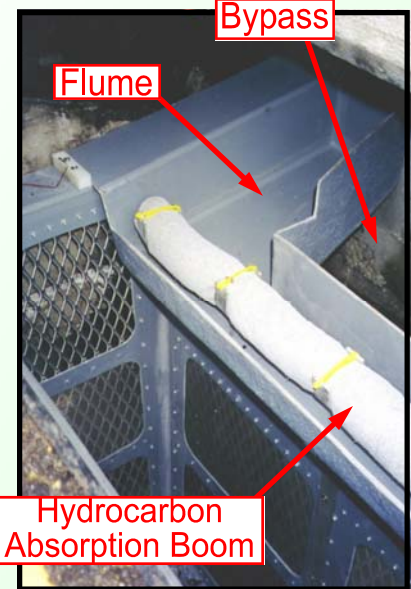
A variety of *Grate Inlet Skimmer Boxes* and *Curb Inlet Baskets* captured a record amount of debris after Hurricane Frances along Hotel Plaza Blvd. In the Reedy Creek Improvement District.

***Just 30 inlet filters combine to capture over 6000 pounds of debris.***

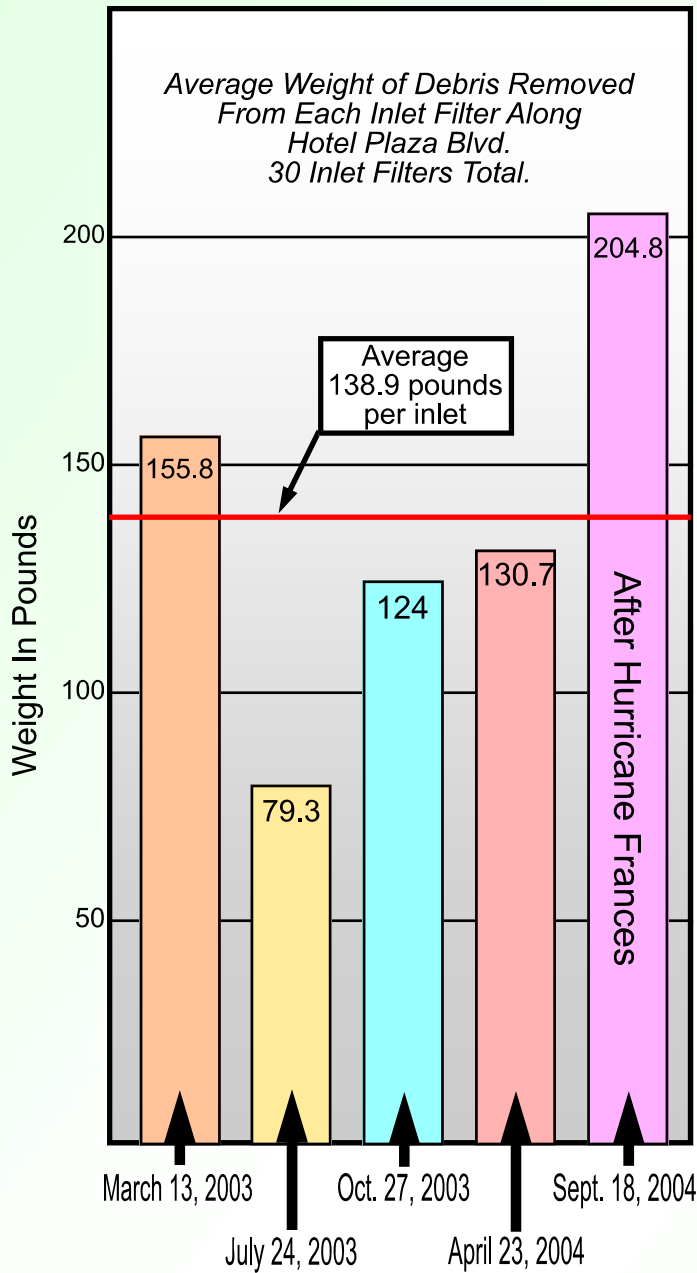
All the inlet filters were completely full and waiting for a service crew to empty their pollutant load. In the mean time, all the inlets continued to flow water as they were designed.

Debris captured by these inlet filters included sediment, foliage, litter, and oils captured by a special hydrocarbon absorption boom.

***Litter includes everything from bottles to a purse.***



Average Weight of Debris Removed From Each Inlet Filter Along Hotel Plaza Blvd. 30 Inlet Filters Total.



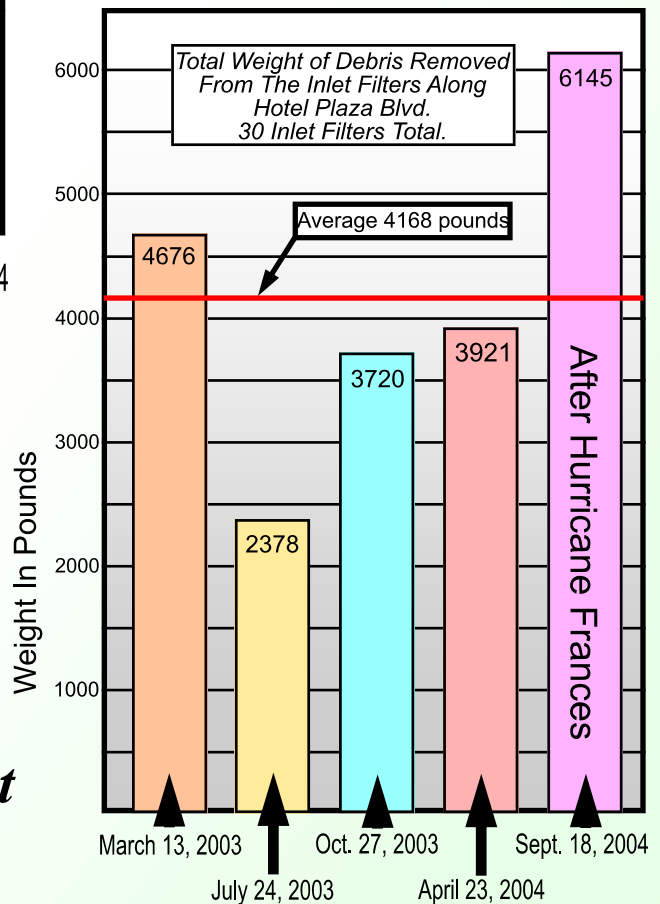
The *Grate Inlet Skimmer Box* has the strength and durability to hold hundreds of pounds of debris indefinitely.

*After hurricane Frances 8 inlet filters had captured over 300 pounds of debris each with the heaviest at 430 pounds.*

## *Built Strong To Last!*

The Suntree inlet filters in Reedy Creek are a great example of how a capable inlet filter can have a major impact on reducing stormwater pollution.

*20,840 pounds of debris were captured in the 5 clean outs, with an average of 138.9 pounds per inlet per clean out.*



*Protecting Your Environment Since 1993*