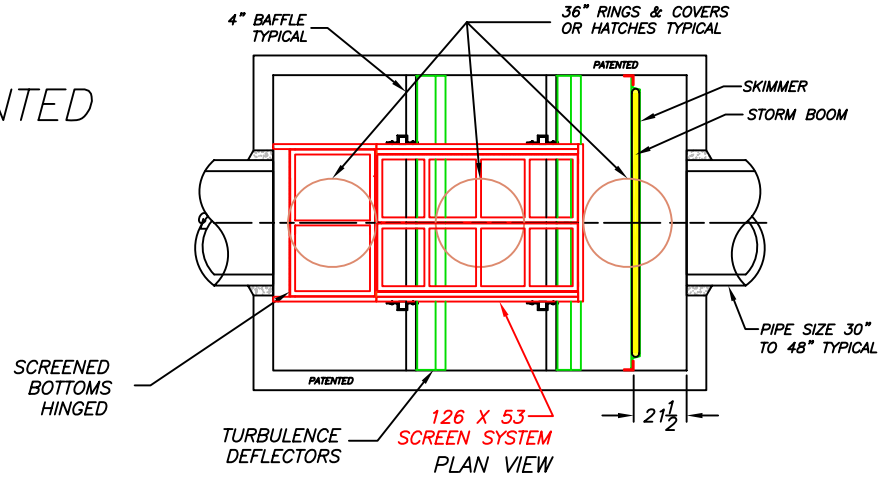


# SUNTREE TECHNOLOGIES MODEL NO. NSBB-10-14-100

## FLOW & BY-PASS SPECIFICATIONS FOR BIOMASS SEPARATING SCREEN SYSTEM, SEDIMENT COLLECTION CHAMBERS, AND SKIMMER SPECIFICATIONS

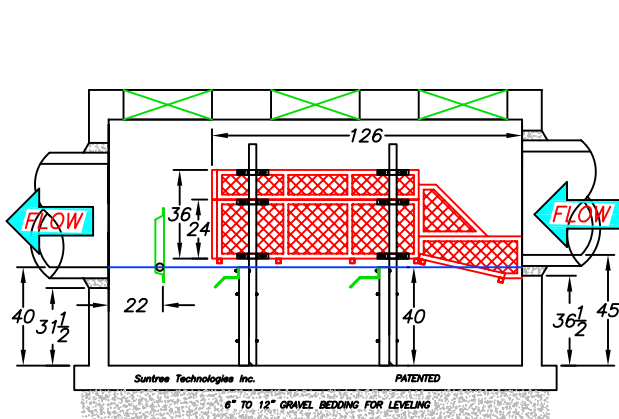
1. Pipe inflow area (Drawn as 42" RCP) — 9.61 sq.ft.
- SCREEN SPECIFICATIONS:**
2. Open orifice area in screen system — 61.56 sq.ft.
  3. Open orifice area in screen system with 50% blockage — 30.78 sq.ft.
  4. Open orifice area in screen system with 75% blockage — 15.39 sq.ft.
  5. Minimum by-pass through screen system below the top surface of the pipe — 16.77 sq.ft.
  6. Minimum by-pass around screen system below the top surface of the pipe — 13.75 sq.ft.
  7. Screen system storage volume — 121 cu.ft.
- SEDIMENT STORAGE:**
8. Volume of first sediment chamber — 150 cu.ft.
  9. Volume of second sediment chamber — 147.2 cu.ft.
  10. Volume of third sediment chamber — 147.2 cu.ft.
  11. Total sediment volume — 444.4 cu.ft.
- SKIMMER SPECIFICATIONS:**
12. Flow area under skimmer — 12.67 sq.ft.
  13. Area of pipe in line with skimmer — 5.68 sq.ft.
  14. Area between the skimmer and the outflow pipe parallel with the surface of the pipe — 9.24 sq.ft.

PATENTED

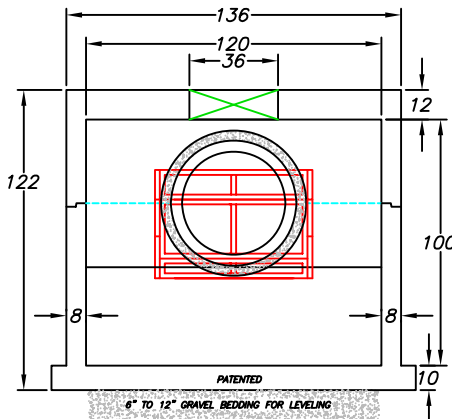


INFLOW AND OUTFLOW PIPES ARE TO BE FLUSH WITH THE INSIDE SURFACE OF THE CONCRETE STRUCTURE (CAN NOT INTRUDE BEYOND FLUSH)

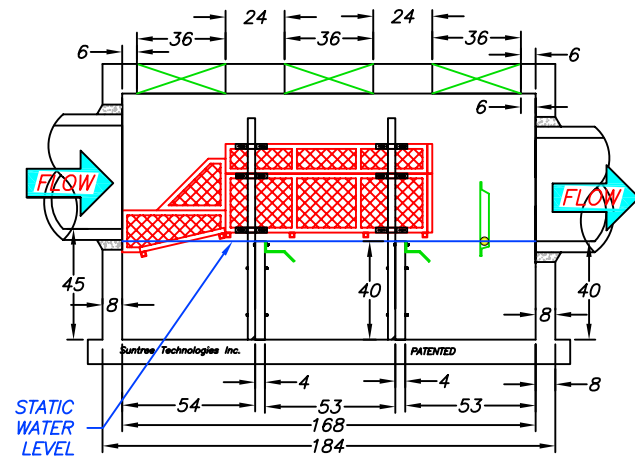
Suntree Technologies Inc.  
798 Clearlake Road, Cocoa, Florida 32922  
Ph: 321-637-7552 Fax: 321-637-7554



REAR VIEW



LEFT END VIEW



FRONT VIEW

NOTES:

1. CONCRETE 28 DAY COMPRESSIVE STRENGTH FC=5000 PSI
2. REINFORCING: ASTM A-615 GRADE 60
3. SUPPORTS AN H2O LOADING AS INDICATED BY AASHTO.
4. JOINT SEALANT: BUTYL RUBBER SS-S-00210
5. ALL WALLS, TOP & BOTTOM ARE 8" THICK
6. TREATMENT DESIGN FLOW FOR 90% REMOVAL EFFICIENCY OF TSS IS 35 CFS.
7. PEAK DESIGN FLOW IS 70 CFS.
8. INFLOW AND OUTFLOW PIPES ARE TO BE FLUSH WITH THE INSIDE SURFACE OF THE CONCRETE STRUCTURE. (CAN NOT INTRUDE BEYOND FLUSH)

SUNTREE TECHNOLOGIES, INC. 798 CLEARLAKE RD, SUITE #2 COCOA, FL. 32922		PROJECT:
NUTRIENT SEPARATING BAFFLE BOX MODEL NO. NSBB-10-14-100		DRAWING #: 4-01-17-07-03
DATE: 01/17/07	SCALE: SF = 72	FILE NAME: NSBB-10-14-100
DRAFTER: T.H.2.	UNITS = INCHES	REVISIONS:
		DATE: