

SUNTREE TECHNOLOGIES MODEL NO. NSBB-2-4-60

FLOW & BY-PASS SPECIFICATIONS FOR THE BIOMASS SEPARATING SCREEN SYSTEM, SEDIMENT STORAGE, AND SKIMMER SPECIFICATIONS.

1. Inflow Pipe Area (10" PVC AS DRAWN) ——— 0.55 sq.ft.

SCREEN SPECIFICATIONS:

- 2. Open orifice area in screen system ——— 5.75 sq.ft.
- 3. Open orifice area in screen system with 50% blockage ——— 2.88 sq.ft.
- 4. Open orifice area in screen system with 75% blockage ——— 1.44 sq.ft.
- 5. By-pass through screen system ——— 0.28 sq.ft.
- 6. Minimum by-pass around screen system ——— 1.67 sq.ft.
- 7. Screen system storage volume ——— 3.87 cu.ft.

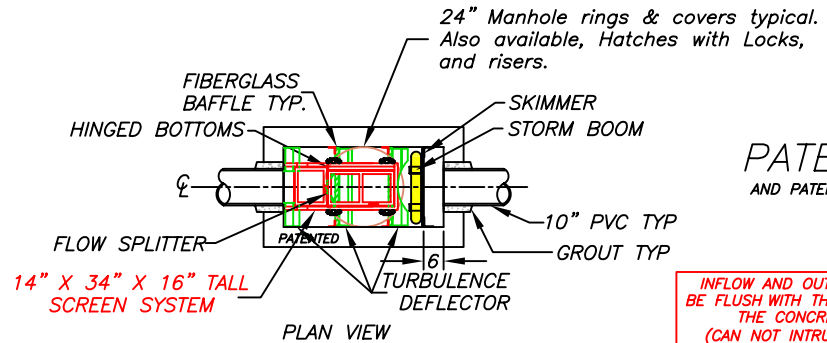
SEDIMENT STORAGE:

- 8. Volume of first chamber ——— 5.08 cu.ft.
- 9. Volume of second chamber ——— 5.00 cu.ft.
- 10. Volume of third chamber ——— 5.08 cu.ft.
- 11. Total sediment storage volume ——— 15.16 cu.ft.

SKIMMER SPECIFICATIONS:

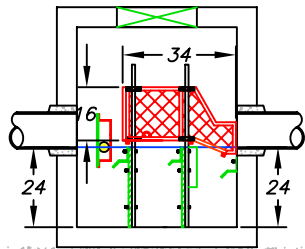
- 12. Flow area under skimmer ——— 1.00 sq.ft.
- 13. Area of pipe in line with skimmer ——— 0.55 sq.ft.
- 14. Area of between skimmer and outflow pipe parallel with the surface of the pipe ——— 1.30 sq.ft.

Suntree Technologies Inc.
798 Clearlake Road, Cocoa, Florida 32922
PH: 321-637-7552 Fax: 321-637-7554

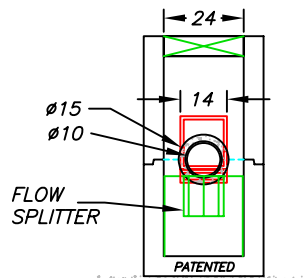


PATENTED
AND PATENTS PENDING

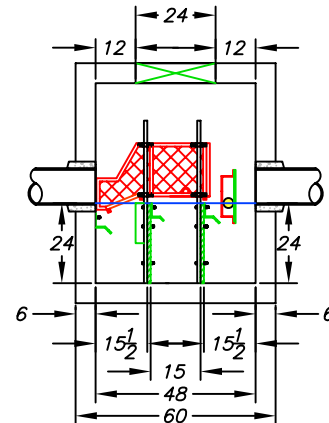
INFLOW AND OUTFLOW PIPES ARE TO BE FLUSH WITH THE INSIDE SURFACE OF THE CONCRETE STRUCTURE.
(CAN NOT INTRUDE BEYOND FLUSH)



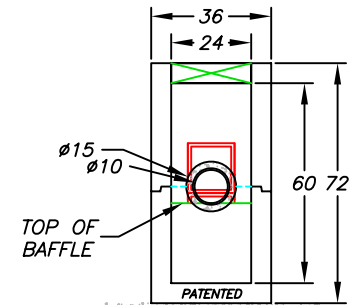
BACK VIEW



LEFT END VIEW



FRONT VIEW



RIGHT END VIEW

NOTES:

- 1. CONCRETE 28 DAY COMPRESSIVE STRENGTH $f_c=5,000$ PSI.
- 2. REINFORCING: ASTM A-615, GRADE 60.
- 3. SUPPORTS AN H2O LOADING AS INDICATED BY AASHTO.
- 4. JOINT SEALANT: BUTYL RUBBER SS-S-00210
- 5. TOP, BOTTOM, +WALLS ARE 6" THICK.
- 6. LIDS FOR THE TOP OF THE SCREEN SYSTEM ARE AVAILABLE.

TREATMENT DESIGN FLOW
1 cfs

PEAK DESIGN FLOW
2 cfs

NSBB-2-4-60F

SUNTREE TECHNOLOGIES, INC. 798 CLEARLAKE RD, SUITE #2 COCOA, FL. 32922		PROJECT: STANDARD MODEL
NUTRIENT SEPARATING BAFFLE BOX MODEL NO. NSBB-2-4-60		DRAWING #: 4-07-11-07-05
DATE: 06/11/06		SCALE: = 57.6
DRAFTER: T.H.2.		UNITS = INCHES
REVISIONS:	DATE:	REVISIONS: