

SUNTREE TECHNOLOGIES MODEL NUMBER: NSBB-4-8-84

FLOW & BY-PASS SPECIFICATIONS FOR THE BIOMASS SEPARATING SCREEN SYSTEM, SEDIMENT STORAGE, AND SKIMMER SPECIFICATIONS.

1. Inflow Pipe Area (18" RCP AS DRAWN) — 1.77 sq.ft.

SCREEN SPECIFICATIONS:

2. Open orifice area in screen system — 13.86 sq.ft.
3. Open orifice area in screen system with 50% blockage — 6.93 sq.ft.
4. Open orifice area in screen system with 75% blockage — 3.46 sq.ft.
5. By-pass through screen system — 2.97 sq.ft.
6. Minimum by-pass around screen system — 3.2 sq.ft.
7. Screen system storage volume — 20.06 cu.ft.

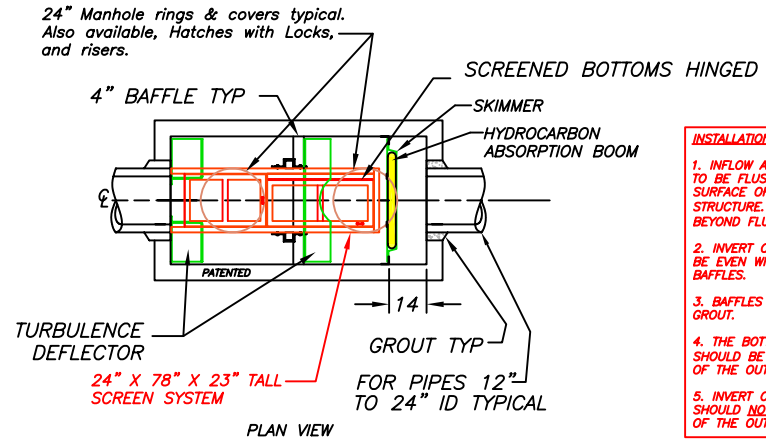
SEDIMENT STORAGE:

8. Volume of first chamber — 46 cu.ft.
9. Volume of second chamber — 46 cu.ft.
10. Volume of total sediment storage — 92 cu.ft.

SKIMMER SPECIFICATIONS:

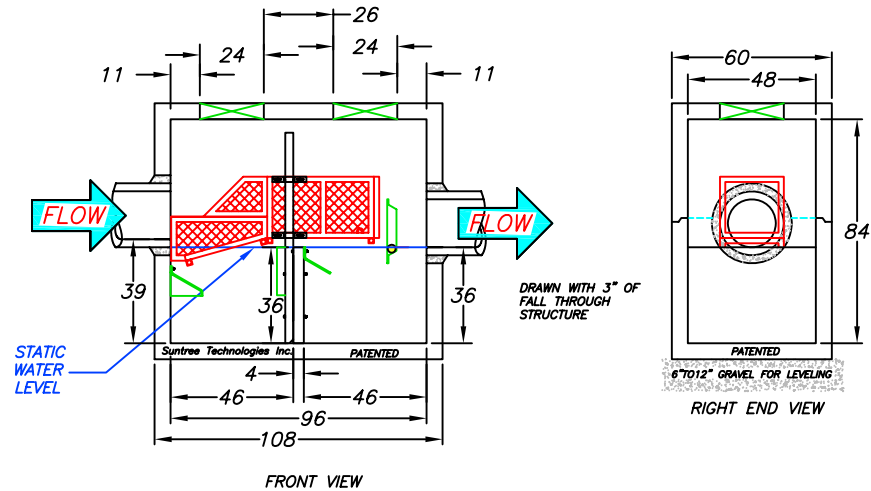
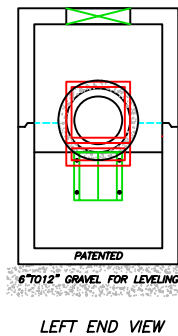
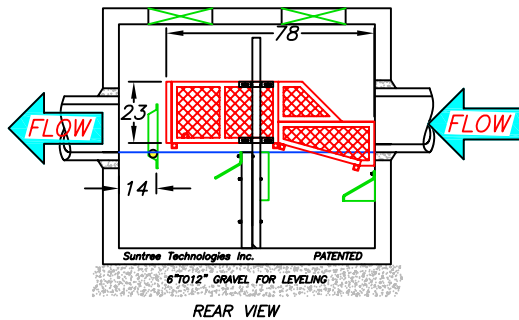
11. Flow area under skimmer — 3.97 sq.ft.
12. Area of pipe in line with skimmer — 1.77 sq.ft.
13. Area between skimmer and outflow pipe parallel with the surface of the pipe — 4.31 sq.ft.

PATENTED
AND PATENTS PENDING



- INSTALLATION NOTES:**
1. INFLOW AND OUTFLOW PIPES ARE TO BE FLUSH WITH THE INSIDE SURFACE OF THE CONCRETE STRUCTURE. (CAN NOT INTRUDE BEYOND FLUSH)
 2. INVERT OF OUTFLOW PIPE SHOULD BE EVEN WITH THE TOP OF THE BAFFLES.
 3. BAFFLES SHOULD BE SEALED WITH GROUT.
 4. THE BOTTOM OF THE SKIMMER SHOULD BE 6" BELOW THE INVERT OF THE OUTFLOW PIPE.
 5. INVERT OF THE INFLOW PIPE SHOULD NOT BE BELOW THE INVERT OF THE OUTFLOW PIPE.

Suntree Technologies Inc.
798 Clearlake Road, Cocoa, Florida 32922
PH: 321-637-7552 Fax: 321-637-7554



Notes:

1. CONCRETE 28 DAY COMPRESSIVE STRENGTH f_c —5,000 PSI.
2. REINFORCING: ASTM A-615, GRADE 60.
3. SUPPORTS AN H2O LOADING AS INDICATED BY AASHTO.
4. JOINT SEALANT: BUTYL RUBBER SS-S-00210
5. ALL WALLS, TOP, AND BOTTOM ARE 6" THICK.
6. INFLOW AND OUTFLOW PIPES ARE TO BE FLUSH WITH THE INSIDE SURFACE OF THE CONCRETE STRUCTURE. (CAN NOT INTRUDE BEYOND FLUSH)
7. HINGED LIDS FOR THE SCREEN SYSTEM ARE AVAILABLE UPON REQUEST.
8. BAFFLES WILL BE SEALED WITH GROUT TO FORM THREE WATER TIGHT CHAMBERS.

PEAK TREATMENT DESIGN FLOW
8 ft³/sec

PEAK DESIGN FLOW
12 ft³/sec

SUNTREE TECHNOLOGIES, INC. 798 CLEARLAKE RD, SUITE #2 COCOA, FL. 32922		PROJECT:	
NUTRIENT SEPARATING BAFFLE BOX MODEL NO. NSBB-4-8-84		DRAWING #: 2-03-06-08-01	
DATE: 02/13/08		SCALE: SF = 72	
DRAFTER: T.H.2.		UNITS = INCHES	
REVISIONS:		DATE:	
REVISIONS:		DATE:	